



Procedure n°2:

Replacing the heating cord

Adding a fuse

Froilabo
Precision for life

I) Required tools and preconditions

This procedure allows you to install a heating cord in the door seal. The addition of this cord prevents the frost formation between this joint and the door. The addition of a fuse improves the overall safety of the device.

To perform this procedure, you are going to need:

- ✓ Cutting pliers
- ✓ 4mm BTR key
- ✓ Sanitary silicone
- ✓ Colson collars (high temperature)
- ✓ Ohmmeter
- ✓ Drift
- ✓ A replacement heating cord and its fuse

It is recommended to **shut down main power and 24V** at least **6 hours** before the operation. The device must be completely thawed to perform the procedure.

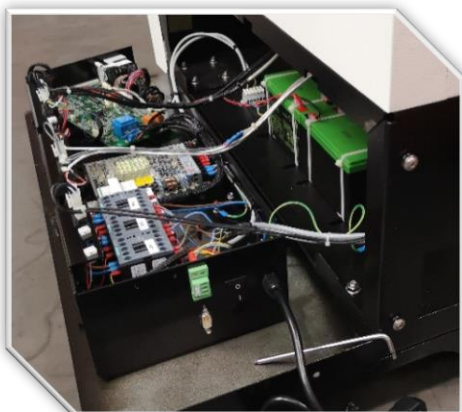
It is highly recommended to also perform the **PR-BM-001** procedure corresponding to the installation of the heating valve pit.

II) Replacing the heating cord



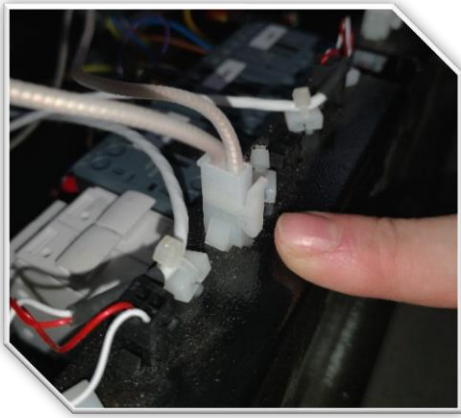
- Unclip the external part of the door seal.
- Remove silicone leftover on the door seal.
- Remove the heating cord for his location.

TIPS : To facilitate the extraction of the heating cord, unclip one corner of the seal and start removing the heating cord from here.



- Disassemble the right bottom part of the frame using a 4mm BTR key.

TIPS : Protect the card to avoid any damages on the card.



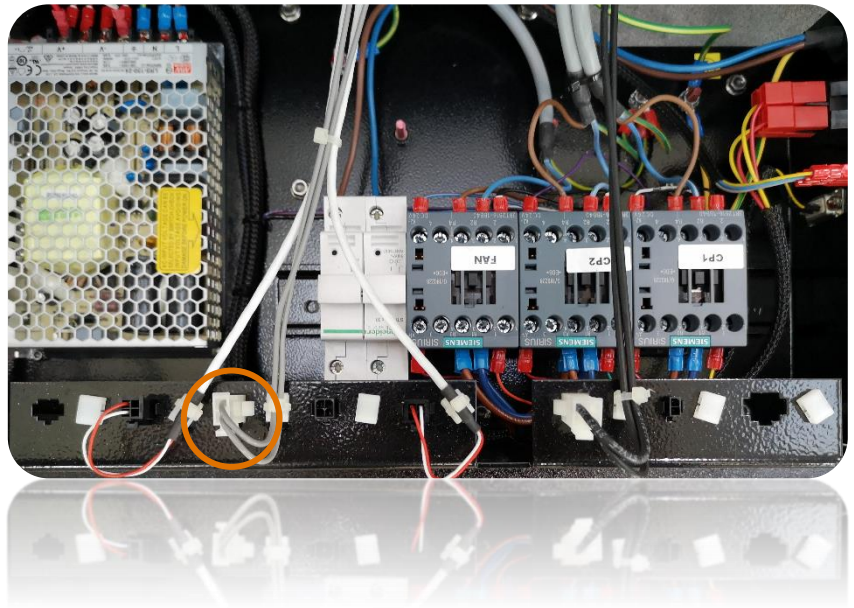
- Spot the heating cord. (Striped wire coming from the box)
- Remove the **collars** blocking the old heating cord.
- Unclip the heating cord connector.

TIPS: It is a 2 pins connector. Wires colour is not contractual.

The heating cord connector is shown in **orange** on the opposite picture.



Collars



- Spot the **junction point** of the wires between the frame and the inner tank. It is located between in the bottom right corner.

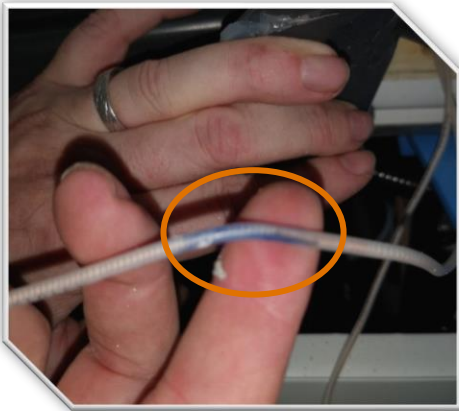
● Beware, presence of silicone can make the extraction of the wires present in junction point very difficult. It is highly recommended to also perform the **PR-BM-001** procedure corresponding to the installation of the heating valve pit.

- Remove the heating cord. Pass the wires of the heating cord from the box to the frame by pulling lightly on the cable

TIPS: If the junction point is blocked by silicone, use a pin punch to clear the way.

III) New heating cord installation

- Pass the cable of the new heating cord through the junction point between the frame and the box. Use a wire with a U-shape tip in order to hook the heating cord. When the heating cord is hooked, pass it slowly and gently from the electronic section to the seal part through the foam.



- Verify the continuity of the element using an ohmmeter.
- Spot the **heating end** of the heating cord. It is marked by a black spot on the wire accompanied with a lack of stripes.

There is 2 « heating end » on the cable.

TIPS: The « heating end » parts will be located in the location between the seal and the foam.



- Reinsert the heating cord in its **nick on the door seal**.

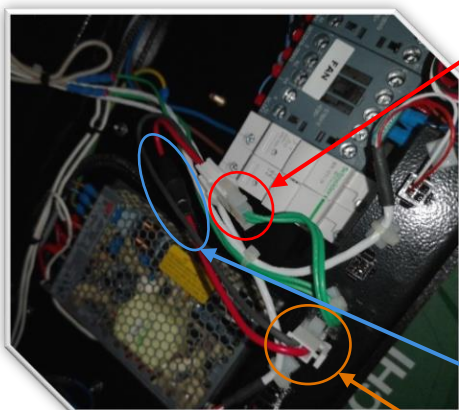
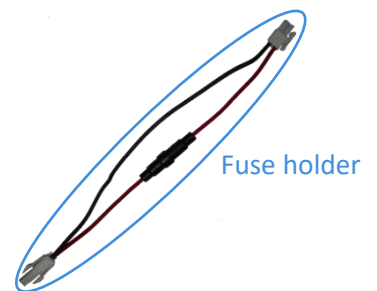
For this, and starting with the lower right corner, put the "heating end" just before the corner of the seal and insert the heating element in it nick.

- Using your finger, push the heating cord at the bottom of the nick all around the door seal.

- Once the heating cord has been inserted into the door seal, gently pull the wire to make it pass completely through the junction point.

TIPS: Let some slack (close to the electronic board) to avoid any wires damages.

- Hang the cables with a temperature-resistant collar.
- Connect the heating cord and add a fuse.



Heating cord connector

- Verify the presence of a fuse in the fuse holder. Verify the continuity of the element using an ohmmeter.
- Connect the **fuse holder** (male) onto the **frame connector** (female).
- Connect the **heating cord connector** (male) onto the **fuse holder** (female).
- Secure with temperature-resistant collars.

Fuse holder

Frame connector

IV) Reinstalling the door seal



- Silicon junction point and door seal. Remember to **siliconize the 4 corners of the chassis** before replacing the door seal.



- Replace the door seal into the frame to ensure good sealing.
- Close the electronic car access panel.



Wait at least 24 hours that the silicone dries before restarting the freezer.

CAUTION: FAILURE TO FOLLOW INSTRUCTIONS ABOVE CAN DAMAGE YOUR UNIT.

Refer to [« User manual »](#) provided with the unit for more information.